



National Protective Security Authority

Product datasheet: PD01 (R2)

RHINO-SFC

NPSA Security Rated Sliding Folding Doors



THE STRENGTH TO PROTECT

NPSA rated product: Approved for UK Government use, for details contact NPSA

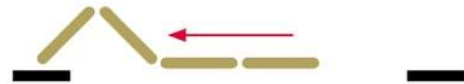
Rhino-SFC Folding Doors

Designed to resist deliberate forced entry, blast, vehicle ram and ballistic attacks
Comprised of any number of high strength panels that can part at any section along the width of the doors, providing greater operational flexibility. The panels fold away into compact areas at the sides of the opening.

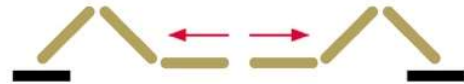
Tested to:	UK Government NPSA (was CPNI) MFES security standard
Optional ratings:	Blast resistance Ballistic resistance to FB4/G2 Ram Resistance to BSi PAS68 (amended)
Configurations:	Sliding folding and bi-parting sliding folding
Maximum opening size:	48000 x 11000mm (w x h)
Door Panels:	100mm thick with steel skins Composite attack resistant core Vertical steel box section joints sealed with dovetailed EDPM seals Solid steel hinges with grease nipple lubricated and phosphor bronze bushes
Guides and rails:	Heavy duty top supported tracks at the head fitted with 'sealed for life' Nylatron bearings Bottom track guide rail manufactured from heavy gauge mild or stainless steel
Operation:	Available with manual, semi-automatic or fully automatic operation
Drop bolts:	Manual or electrically operated
Optional extras:	Wicket door for personnel access Louvres Glazing Bi-parting option tailored to crane rail protrusions
Finishes:	'Colorcoat' sheets from a range of standard colours Galvanised steel Finish painted in a choice of colours



Rhino-SFC Sliding Folding Door



Rhino-SFC Sliding Folding Bi-Parting



Contact details

Rhino Systems Limited

Maritime Road
Llewellyns Quay
Port Talbot
SA13 1RF

T: +44 (0) 1639 888 119

info@rhinodoors.com
www.rhinodoors.com

