

RHINO-SFC

CPNI Security Rated Sliding Folding Doors



THE STRENGTH TO PROTECT

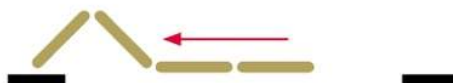
Rhino-SFC Folding Doors

Designed to resist deliberate forced entry, blast, vehicle ram and ballistic attacks. Comprised of any number of high strength panels that can part at any section along the width of the doors, providing greater operational flexibility. The panels fold away into compact areas at the sides of the opening.

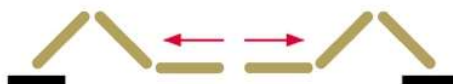
- Tested to:** UK Government NPSA (was CPNI) MFES security standard
- Optional ratings:** Blast resistance
Ballistic resistance to FB4/G2
Ram Resistance to BSi PAS68 (amended)
- Configurations:** Sliding folding and bi-parting sliding folding
- Maximum opening size:** 48000 x 11000mm (w x h)
- Door Panels:** 100mm thick with steel skins
Composite attack resistant core
Vertical steel box section joints sealed with dovetailed EDPM seals
Solid steel hinges with grease nipple lubricated and phosphor bronze bushes
- Guides and rails:** Heavy duty top supported tracks at the head fitted with 'sealed for life' Nylatron bearings
Bottom track guide rail manufactured from heavy gauge mild or stainless steel
- Operation:** Available with manual, semi-automatic or fully automatic operation
- Drop bolts:** Manual or electrically operated
- Optional extras:** Wicket door for personnel access
Louvres
Glazing
Bi-parting option tailored to crane rail protrusions
- Finishes:** 'Colorcoat' sheets from a range of standard colours
Galvanised steel
Finish painted in a choice of colours



Rhino-SFC Sliding Folding Door



Rhino-SFC Sliding Folding Bi-Parting



Contact details

Rhino Systems Limited

Maritime Road
Llewellyns Quay
Port Talbot
SA13 1RF

T: +44 (0) 1639 888 119

info@rhinodoors.com
www.rhinodoors.com

