

# RHINO-SFC

CPNI Security Rated Sliding Folding Doors



Rhino Doors

THE STRENGTH TO PROTECT

## Rhino-SFC Folding Doors

Designed to resist deliberate forced entry, blast and ballistic attacks

Comprised of any number of high strength panels that can part at any section along the width of the doors, providing greater operational flexibility. The panels fold away into compact areas at the sides of the opening.

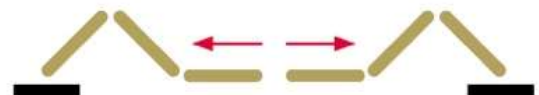
Tested to:	UK Government CPNI security standard
Optional ratings:	Blast resistance Ballistic resistance to FB4/G2 Ram Resistance to BSi PAS68 (amended)
Configurations:	Sliding folding and bi-parting sliding folding
Maximum opening size:	48000 x 11000mm (w x h)
Door Panels:	Available 40 & 60mm thick with steel skins Composite attack resistant core Vertical steel box section joints sealed with dovetailed EDPM seals Solid steel hinges with grease nipple lubricated and phosphor bronze bushes
Guides and rails:	Heavy duty top supported tracks at the head fitted with 'sealed for life' Nylatron bearings Bottom track guide rail manufactured from heavy gauge mild or stainless steel
Operation:	Available with manual, semi-automatic or fully automatic operation
Drop bolts:	Manual or electrically operated
Optional extras:	Wicket door for personnel access Louvres Glazing Bi-parting option tailored to crane rail protrusions
Finishes:	'Colorcoat' sheets from a range of standard colours Galvanised steel Finish painted in a choice of colours



**Rhino-SFC** Sliding Folding Door



**Rhino-SFC** Sliding Folding Bi-Parting



### Contact Details

#### Rhino Systems Ltd

Maritime Road  
Llewellyns Quay  
Port Talbot  
SA13 1RF

T: +44 (0)1639 888 119

F: +44 (0)1639 898 119

[enquiries@rhinodoors.com](mailto:enquiries@rhinodoors.com)

[www.rhinodoors.com](http://www.rhinodoors.com)



'A portfolio company of Cyrus Investment Management LLP'